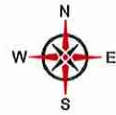


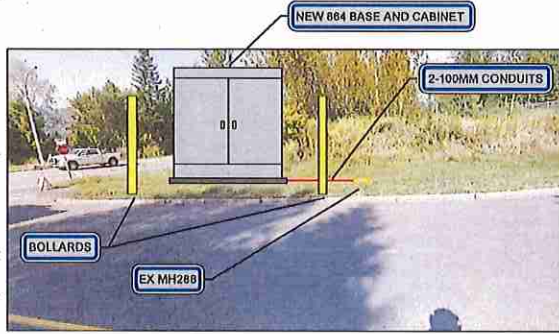
PLAN VIEW  
HORIZONTAL SCALE: 1 : 250

RECEIVED AND PROCESSED  
BY LAND DEVELOPMENT  
INITIALS. *[Signature]*  
JUL 13 2017



NOTES:

600	INSTALL 884F FDH ON CONCRETE PAD WITH 2x BOLLARDS. SEE DETAIL 'C' SHEET 500
601	STUB 2-100mm DUOTS 0.6m ABOVE FINISHED GRADE
502	INSTALL (2) 100mm DBII PVD CONDUIT L= 5.0 m. SEE DETAIL 'B' SHEET 500
603	CORE FOR 2-100mm CONDUIT IN TELUS MH-288 SEE DETAIL 'A' SHEET 600



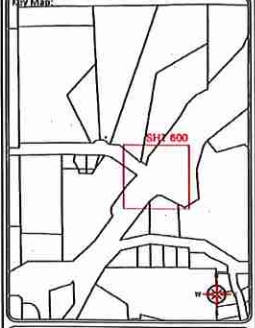
JINKERSON RD & TESKEY WAY  
FDH - SITE PLAN  
N.T.S.

CAUTION:  
GAS FACILITIES IN AREA  
LOCATE AND EXPOSE  
PRIOR TO COMMENCING WORK

METHOD OF PLACEMENT  
VIA OPEN TRENCH UNLESS  
OTHERWISE NOTED

ALL MEASUREMENTS ARE IN  
METERS UNLESS NOTED

Sheet Title:  
Design  
Function:  
Make ready Task:  
FDH Placement



**BO ONE CALL**  
CALL BEFORE YOU DIG  
1-800-424-9200  
OR BY CALLING 604  
UNCOVER AREA 800-3340  
CALL AT LEAST TWO FULL BUSINESS DAYS  
BEFORE YOU PLAN TO DIG

Client: TELUS

Prepared by:  
 FAFL  
SUITE 200 - 7485 130 ST  
Surrey BC V3W 1H8

Rev	Date	Notes	QC
-	-	-	-
-	-	-	-
-	-	-	-
-	-	-	-

DATE: May 28 2017  
DRAWN BY: TARANA AHAMMED  
DESIGNED BY: KADTEC SYSTEMS

Proprietary Information  
Not for disclosure except under written agreement

Scale = 1:250

Project:  
Falcon 2017  
SRDS 3033B - 2629284  
Sardis, BC

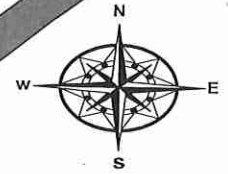
File Name:  
(DWG) SRDS 3033B - 2629284FDH  
COID Route  
SRDS 3033B  
Network Number Sheet Number  
2629284 600

Date: July 12, 2017 Author: Kat McCawley 604-444-3732 ext 247 Project: SRDS 3033B- 2629284 FDH  
Universal Flagging: 170-8061 Lougheed Hwy, Burnaby, BC V5A 1W9 Office: 604-444-3732 Dwg: 001

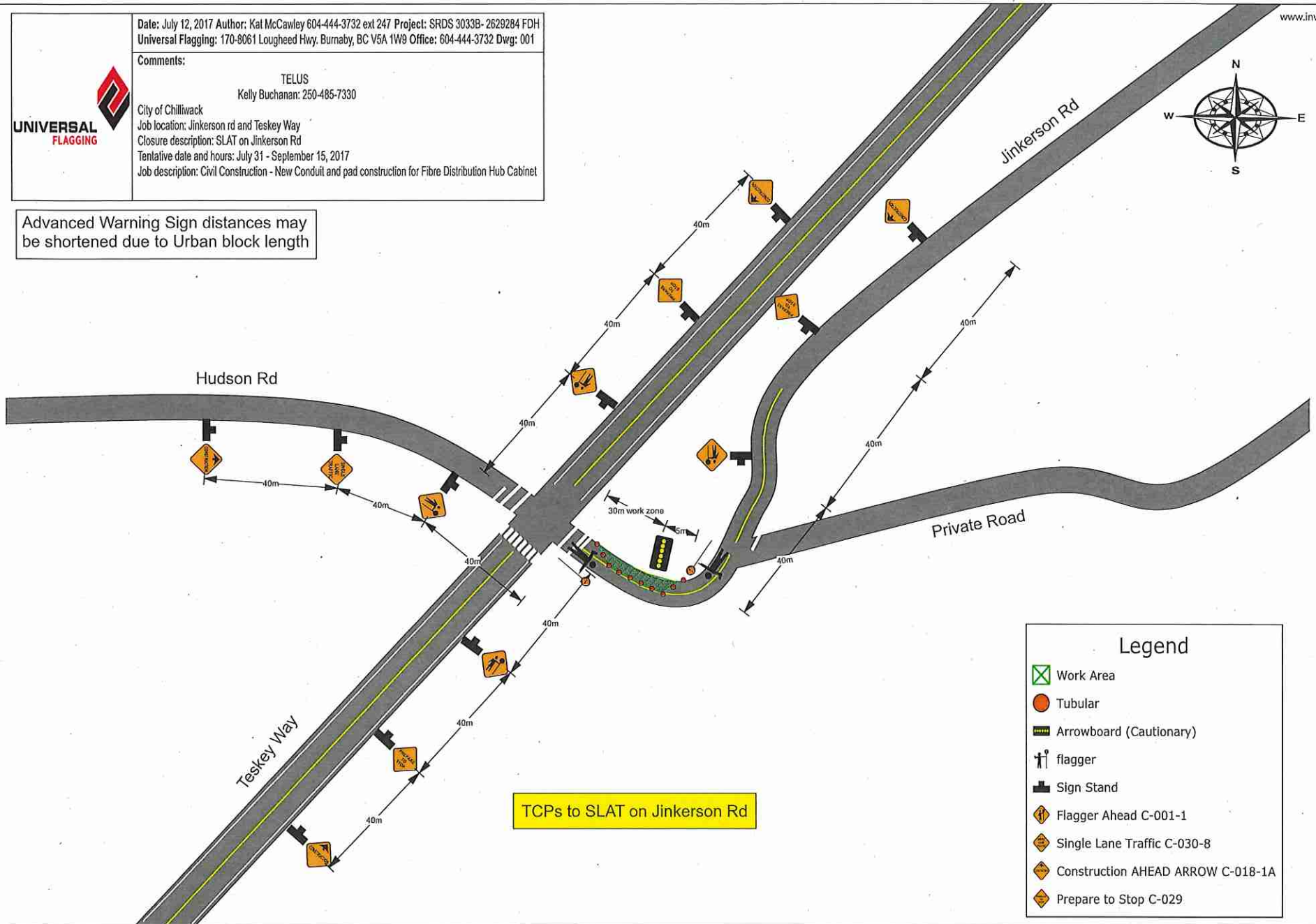
Comments:

TELUS  
Kelly Buchanan: 250-485-7330

City of Chilliwack  
Job location: Jinkerson rd and Teskey Way  
Closure description: SLAT on Jinkerson Rd  
Tentative date and hours: July 31 - September 15, 2017  
Job description: Civil Construction - New Conduit and pad construction for Fibre Distribution Hub Cabinet



Advanced Warning Sign distances may be shortened due to Urban block length



**Legend**

- Work Area
- Tubular
- Arrowboard (Cautionary)
- flagger
- Sign Stand
- Flagger Ahead C-001-1
- Single Lane Traffic C-030-8
- Construction AHEAD ARROW C-018-1A
- Prepare to Stop C-029